



Govt. College for Women, Parade Ground, Jammu-180001, J&K,

Criteria IV – Infrastructure and Learning Resources

Metrics No: 4.1.3

4.1.3 Percentage of classrooms and seminar halls with ICT – enabled facilities such as smart class, LMS, etc. (Data for the latest completed academic year)

Supporting Documents



GOVT. COLLEGE FOR WOMEN, PARADE GROUND, JAMMU-180001, J&K
(Erstwhile Maharani Mahila College)
Autonomous college affiliated to the University of Jammu
(Estd. 1944)

Dr. S.P Sarswat
Principal

E-mail: principalgcwparade@gmail.com
Tel.(O): 0191-2544305
(M): 94191-03074

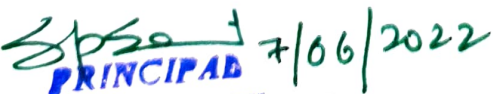
No:-WCP/Coll./2022/ 1909

Dated:-07-06-2022

Declaration by the Principal

It is pertinent to state here that the laboratories where sufficient ICT infrastructure has been created are put to dual use i.e. Laboratories / classrooms. This is simply to make the best use of the available ICT facilities installed in the College. As such the total Nos. of classrooms and Laboratories indicated separately may register some change. In the present context due to multiple uses of the ICT facilities the classification of the facilities ought to have been as follows

1. Classrooms without ICT facilities
2. Classrooms with ICT facilities
3. Laboratories/ classrooms with ICT facilities put to dual use
4. Laboratories without ICT facilities
5. Laboratories with ICT facilities


PRINCIPAL 7/06/2022
Govt. College for Women
Parade Ground Jammu



**Govt. College for Women, Parade Grouud, Jammu-180001, J&K,
(Erstwhile Maharai Mahila College)
Autonomous College Affiliated to the University of Jammu**


(Estd 1944)

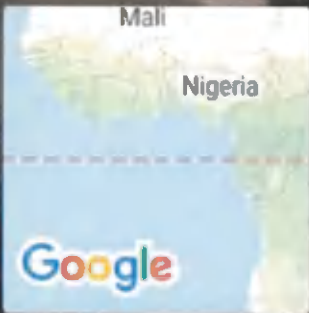
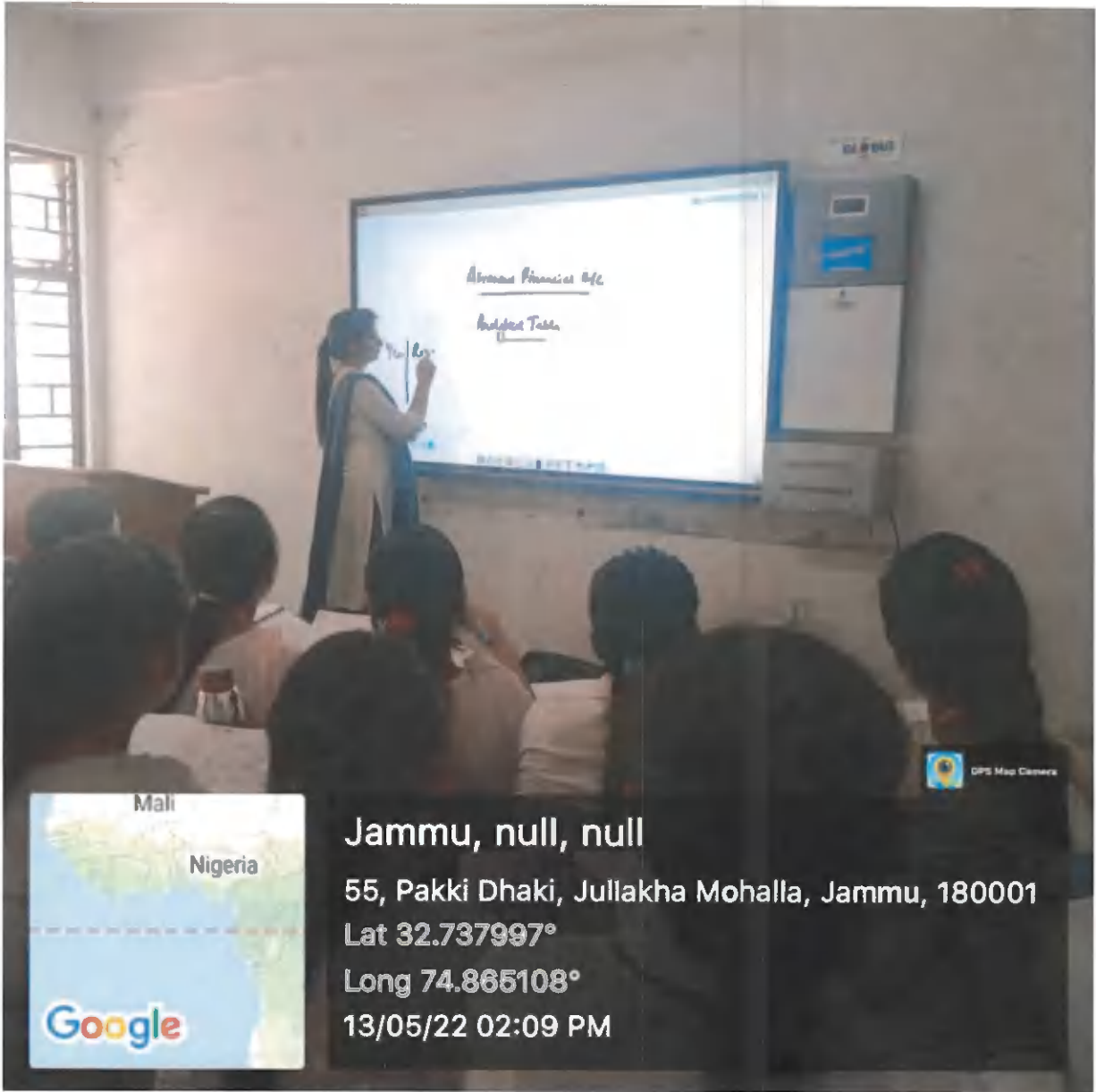
Additional Information

4.1.3-

S.No.	Facility Available	Quauntity
1	Number of classrooms with LCD facility As per the data template	02
2	Number of Classrooms with Wifi/Lan Facilities As per the data template all smart classrooms have access to Wifi & twenty two are equipped with Laning	26/22
3	Number of Smart Classrooms As per the data template	26
4	Number of Classrooms with LMS facilities As per the data template	NIL
5	Number of Semiuar Halls with ICT facilities As per the data template	02
6	Number of Classrooms and Semiuar Halls with ICT faciities As per the data template	26 (Smart classrooms) 10(Projector & Motorized Screen) 01 (Smart seminar hall) 01 (ICT equipped auditorium/seminar hall= 38

Principal


PRINCIPAL
Govt. College for Women
Parade Ground Jammu



Jammu, null, null

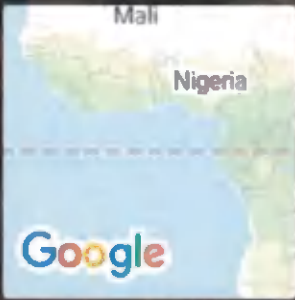
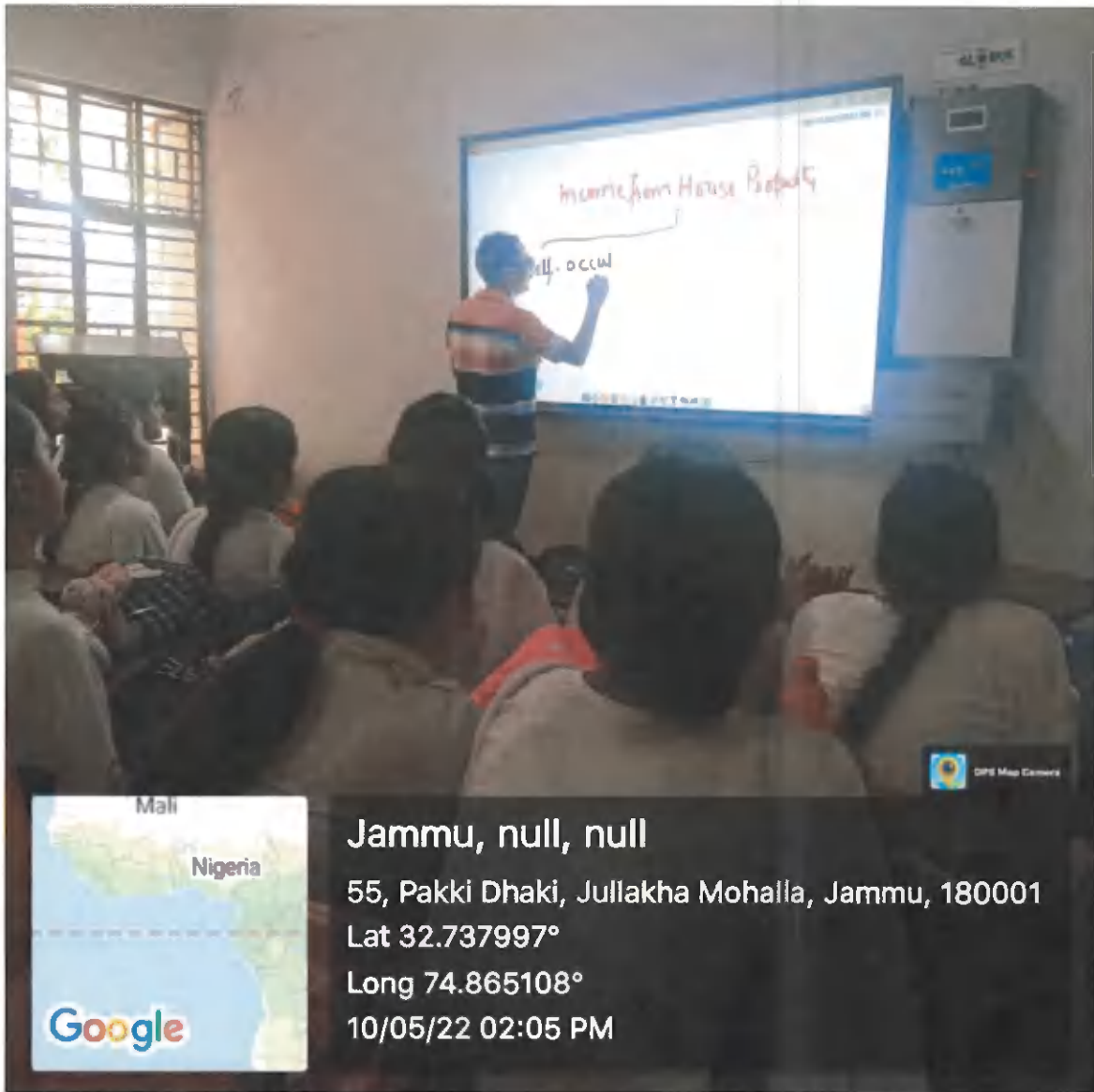
55, Pakki Dhaki, Jullakha Mohalla, Jammu, 180001

Lat 32.737997°

Long 74.865108°

13/05/22 02:09 PM

ROOM NO. 8



Jammu, null, null

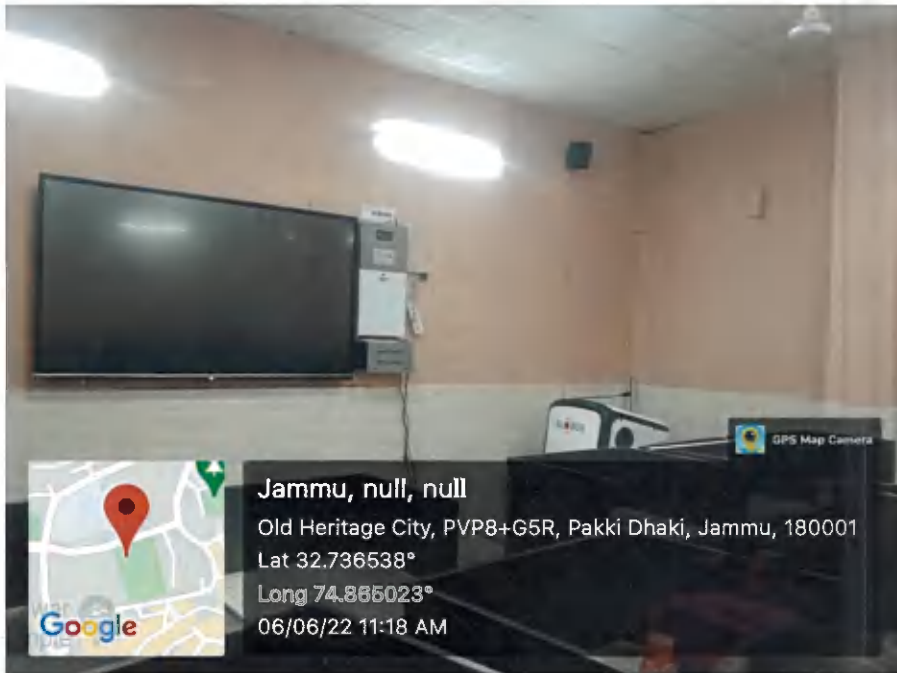
55, Pakki Dhaki, Jullakha Mohalla, Jammu, 180001

Lat 32.737997°

Long 74.865108°

10/05/22 02:05 PM

ROOM NO.9



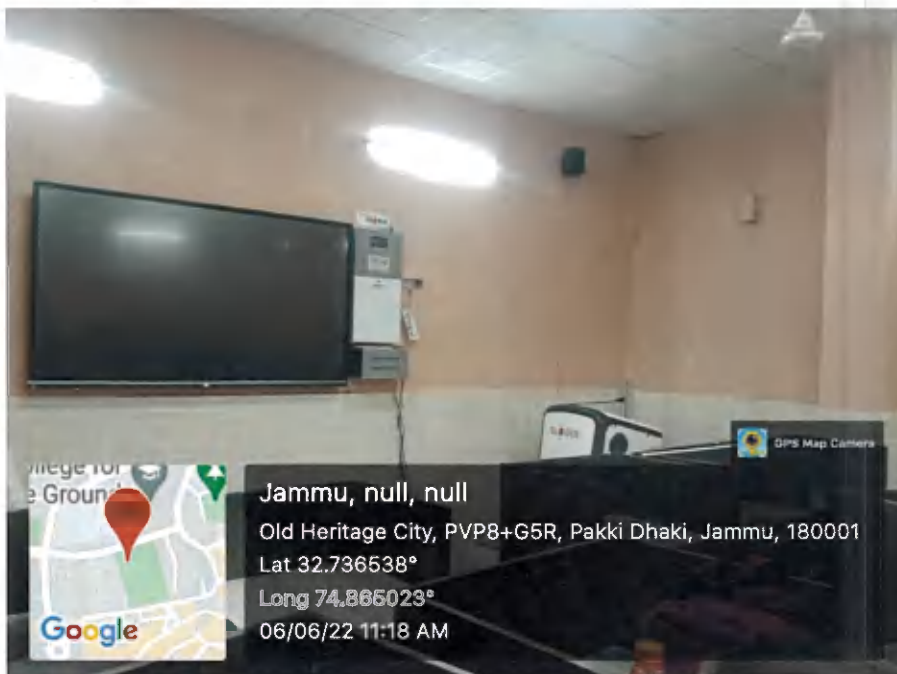
Jammu, null, null

Old Heritage City, PVP8+G5R, Pakki Dhaki, Jammu, 180001

Lat 32.736538°

Long 74.866023°

06/06/22 11:18 AM



Jammu, null, null

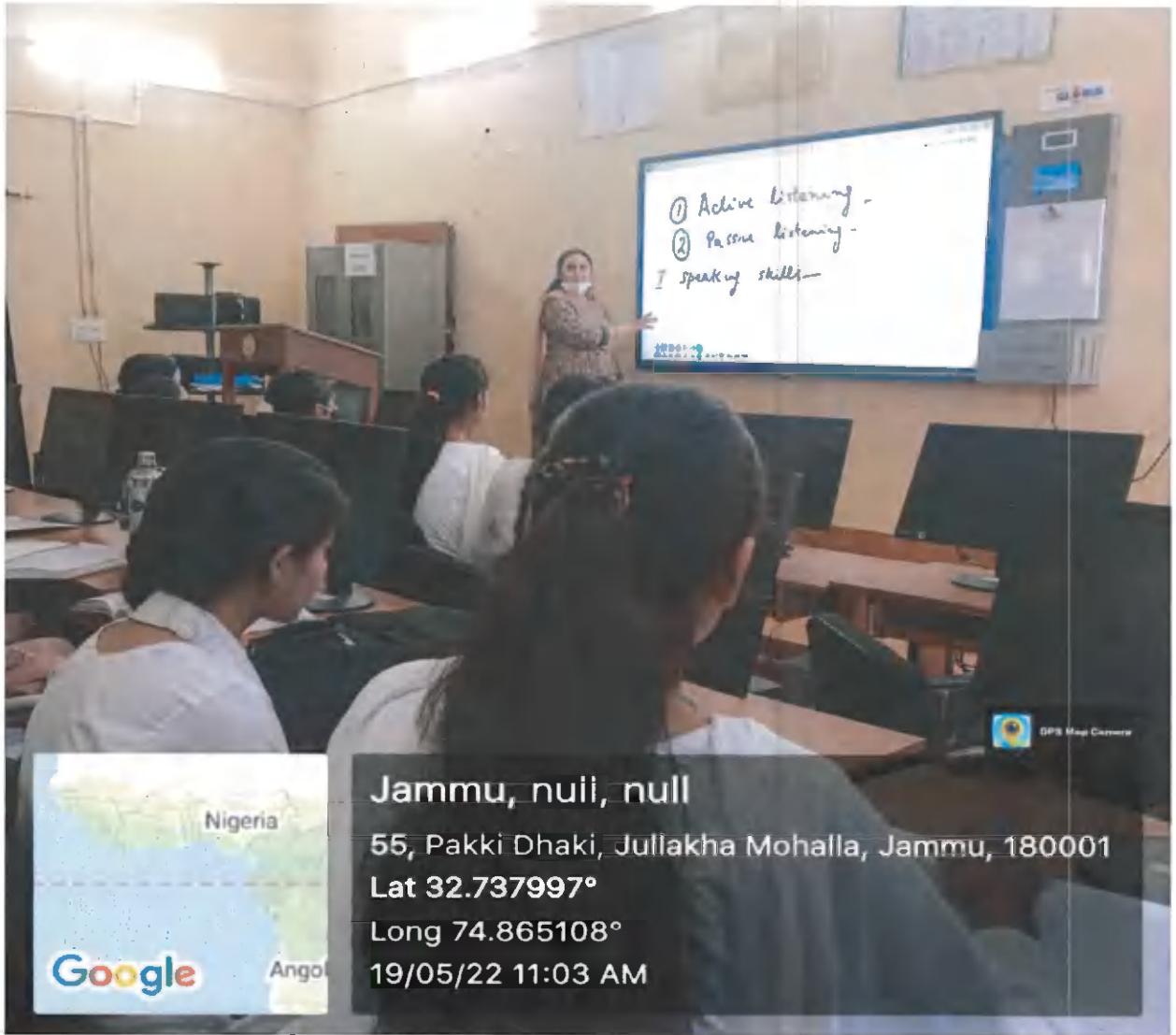
Old Heritage City, PVP8+G5R, Pakki Dhaki, Jammu, 180001

Lat 32.736538°

Long 74.866023°

06/06/22 11:18 AM

S.B.P CLASSROOM MCMP (SMART CLASSROOM)



Jammu, nuii, null

55, Pakki Dhaki, Jullakha Mohalla, Jammu, 180001

Lat 32.737997°

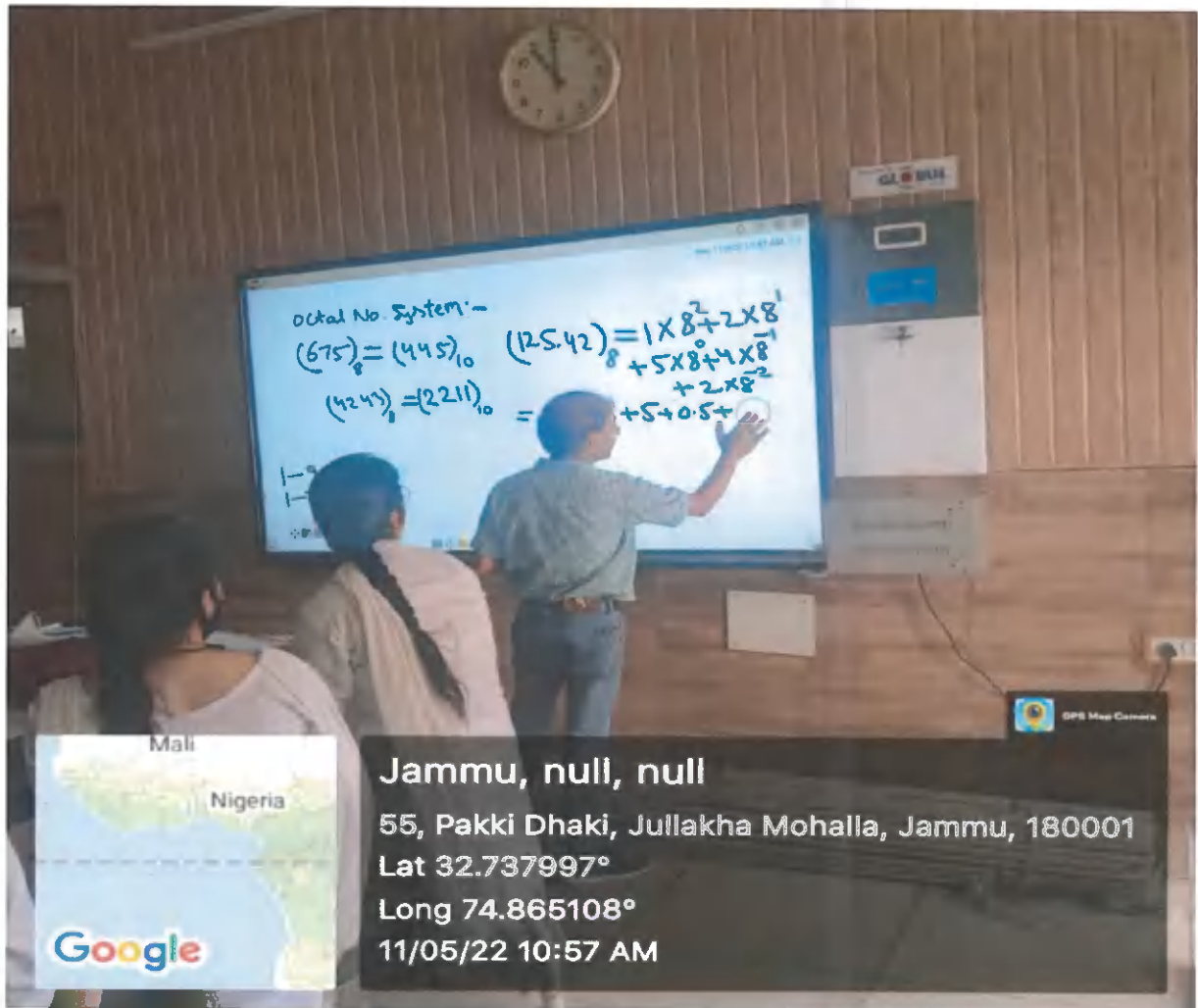
Long 74.865108°

19/05/22 11:03 AM

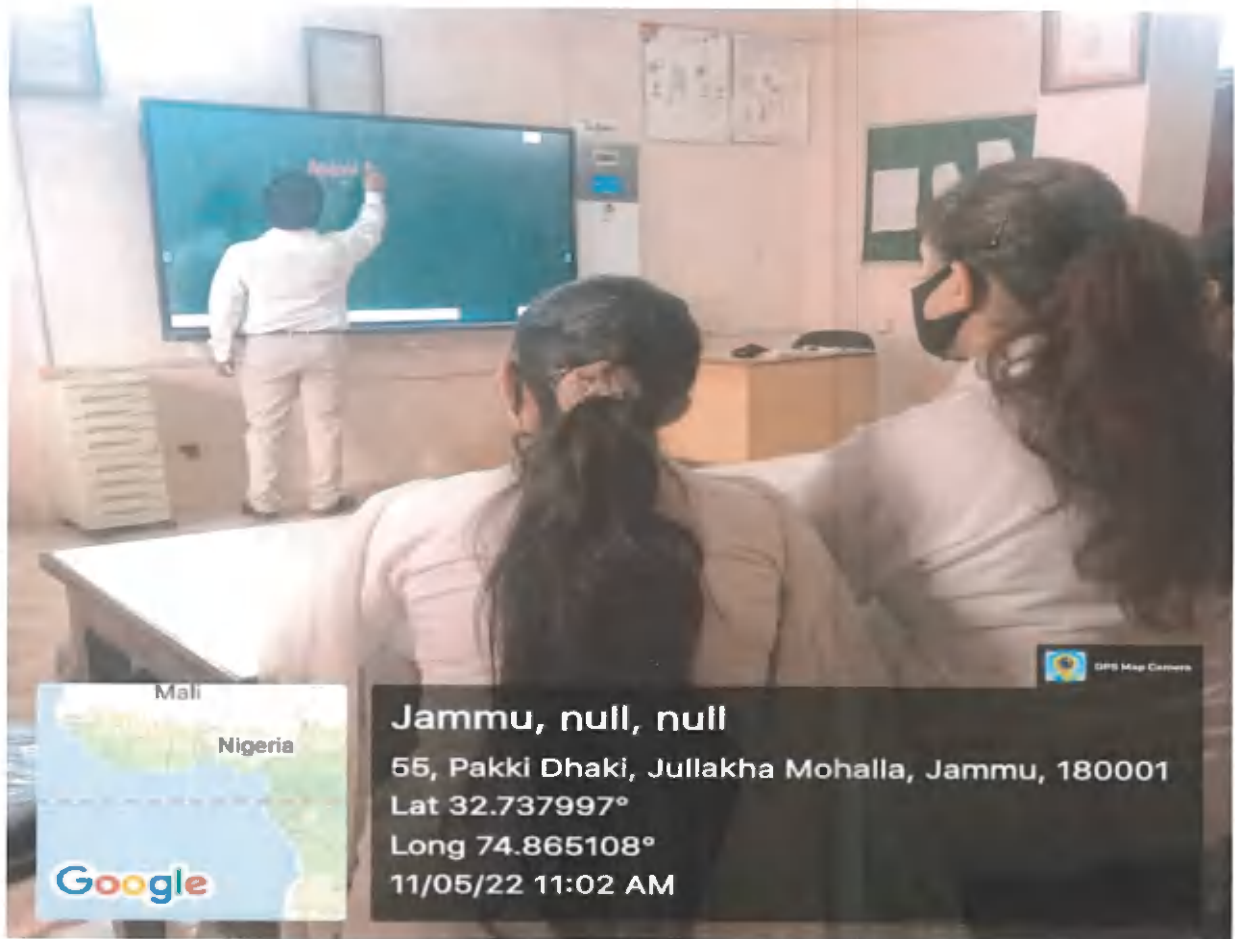
FUNCTIONAL ENGLISH CLASSROOM/LAB



SMART SEMINAR HALL



ELECTRONICS SMART CLASSROOM / LAB I



ELECTRONICS SMART CLASSROOM/ LAB 3



Jammu, null, null

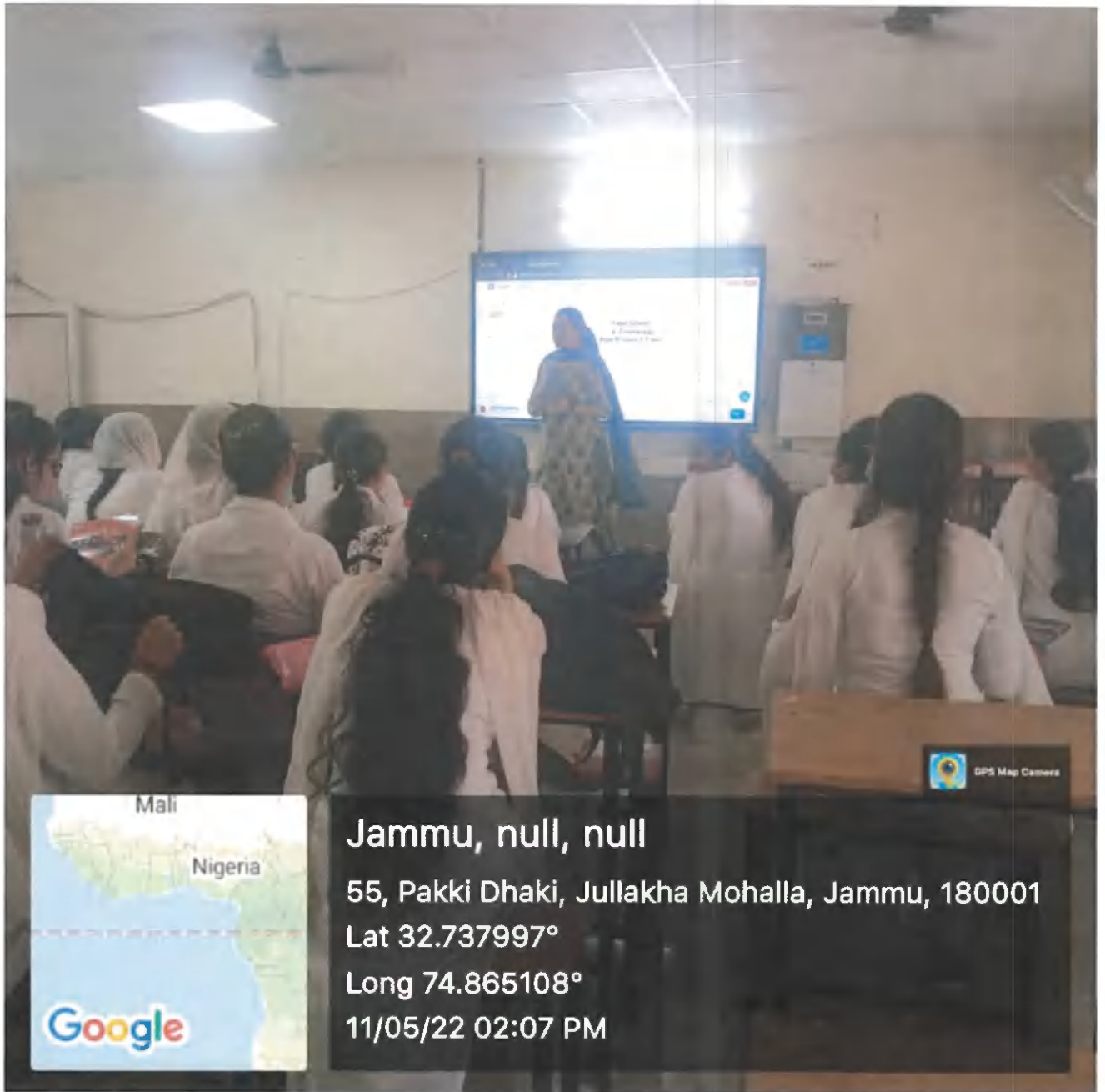
55, Pakki Dhaki, Jullakha Mohalla, Jammu, 180001

Lat 32.737997°

Long 74.866108°

11/05/22 01:03 PM

PG ZOOLOGY CLASSROOM 1



Jammu, null, null

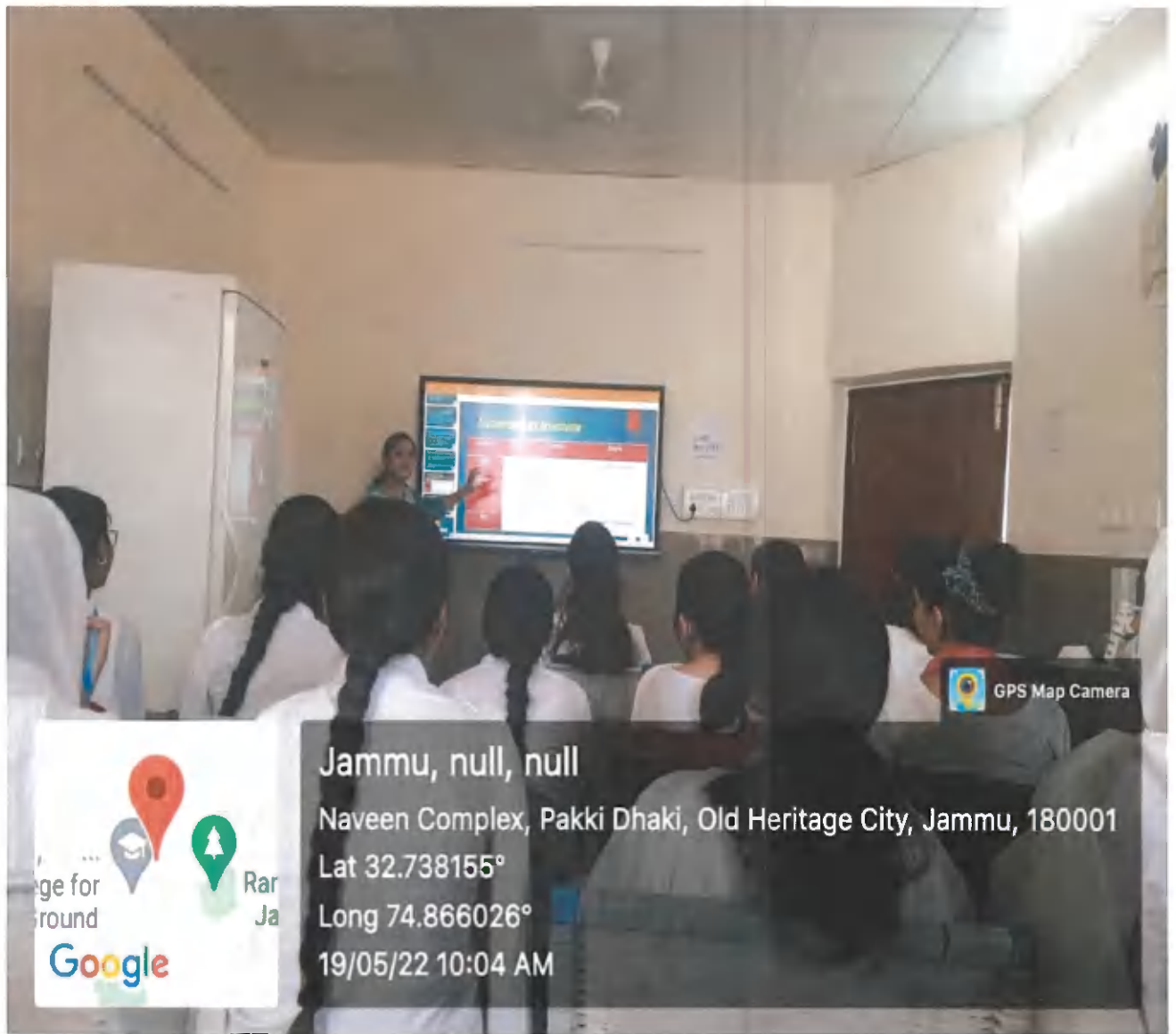
55, Pakki Dhaki, Jullakha Mohalla, Jammu, 180001

Lat 32.737997°

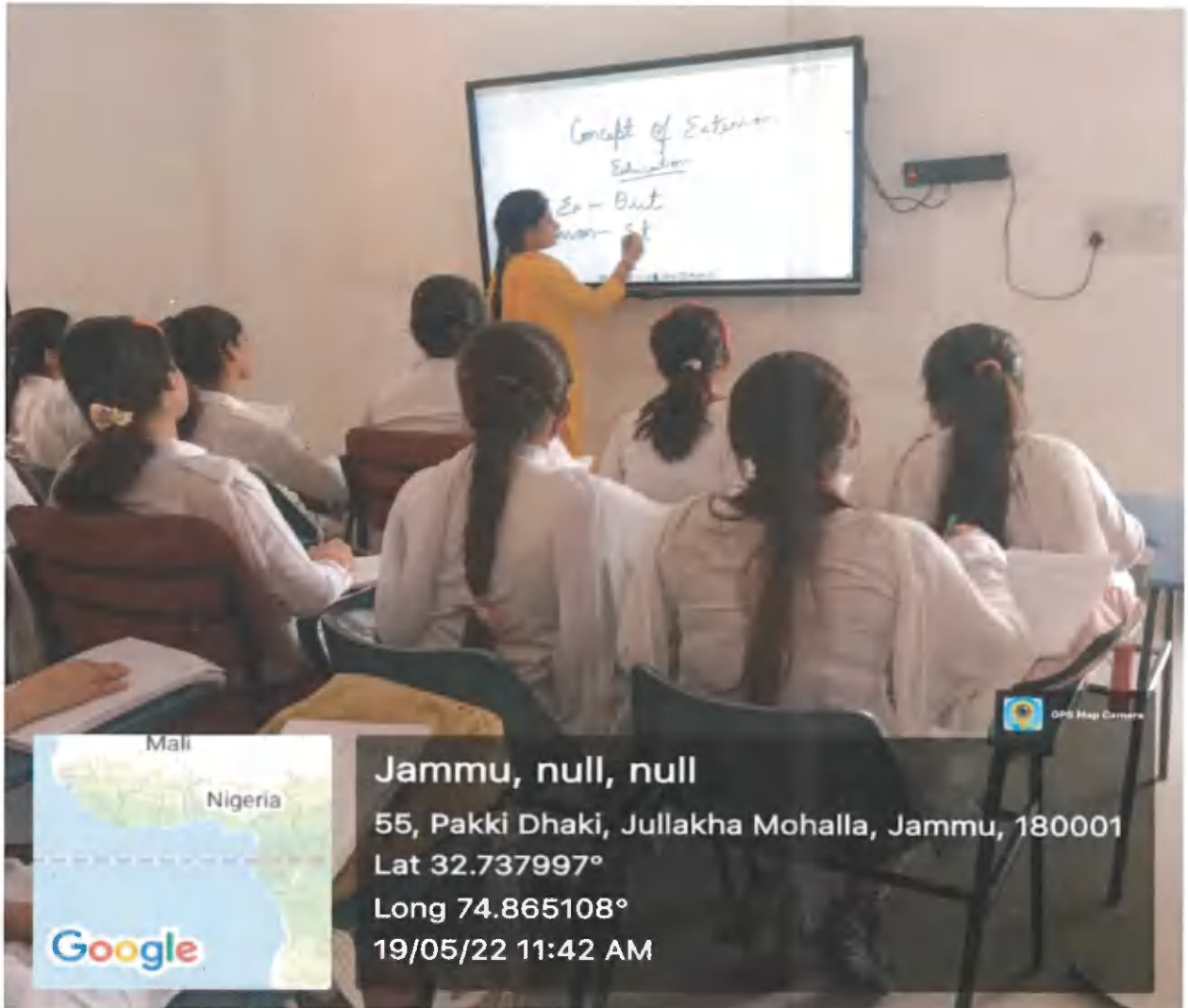
Long 74.865108°

11/05/22 02:07 PM

PG ZOOLOGY CLASSROOM 2

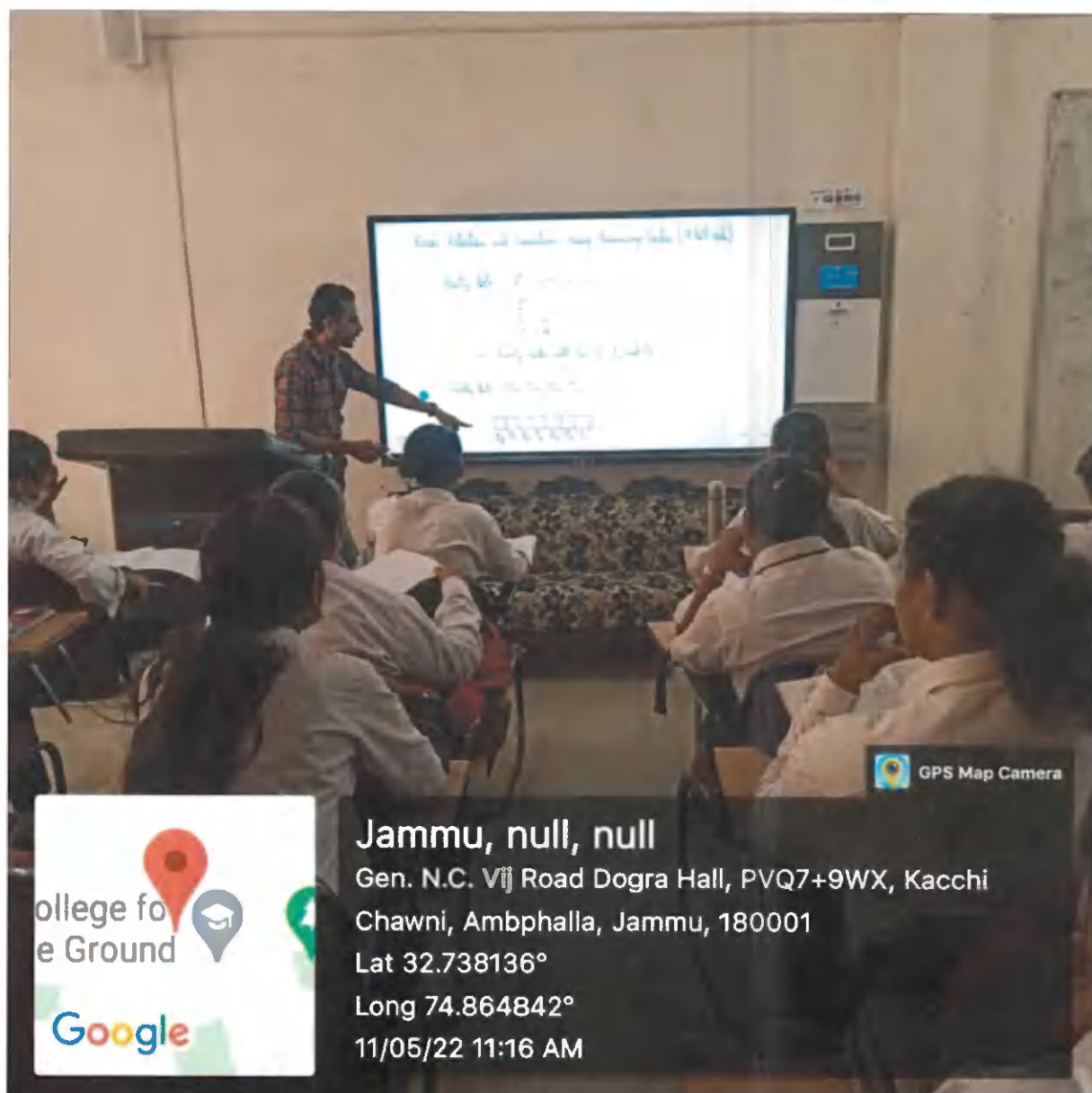


BIO-TECHNOLOGY CLASSROOM/ LAB-2



P.G CLASSROOM -2

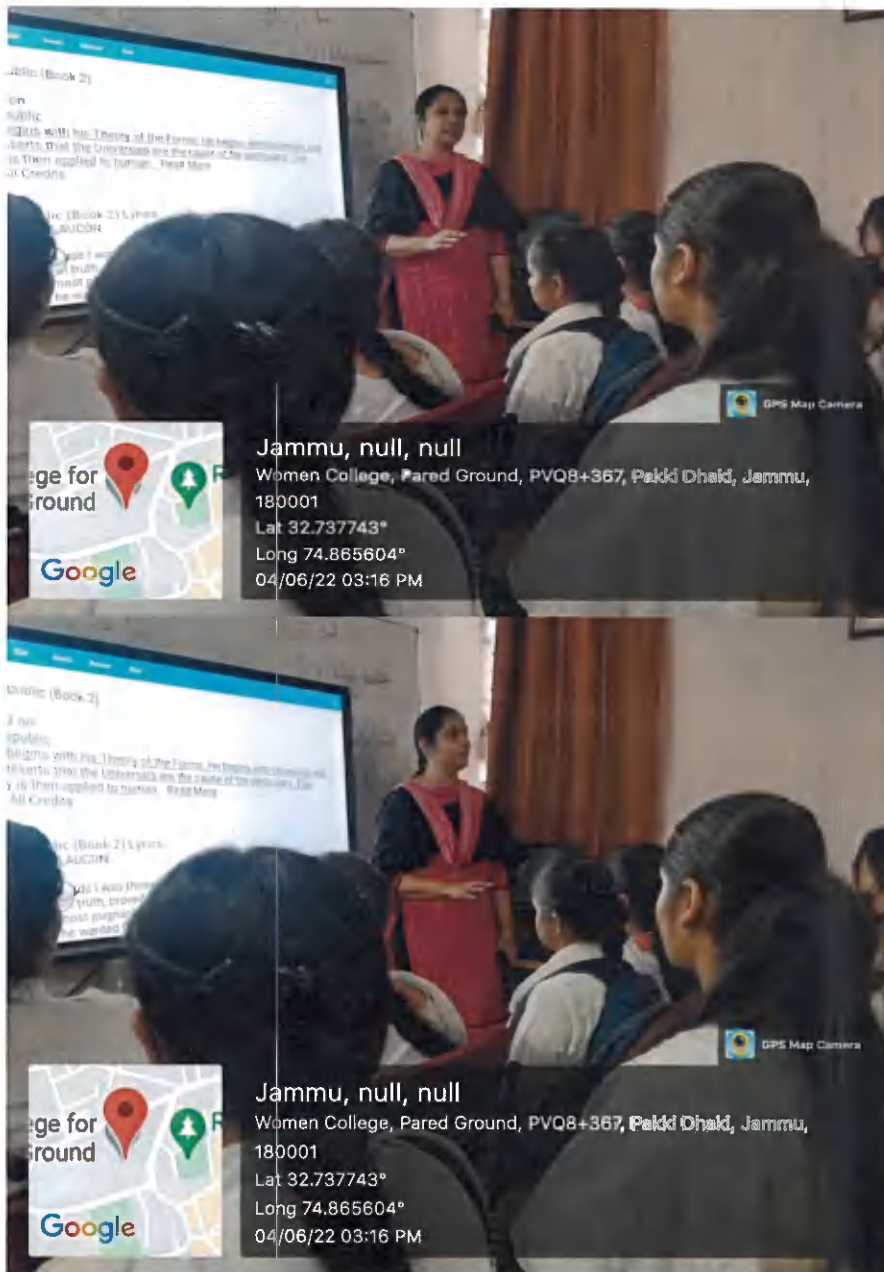
SHARDA BLOCK:



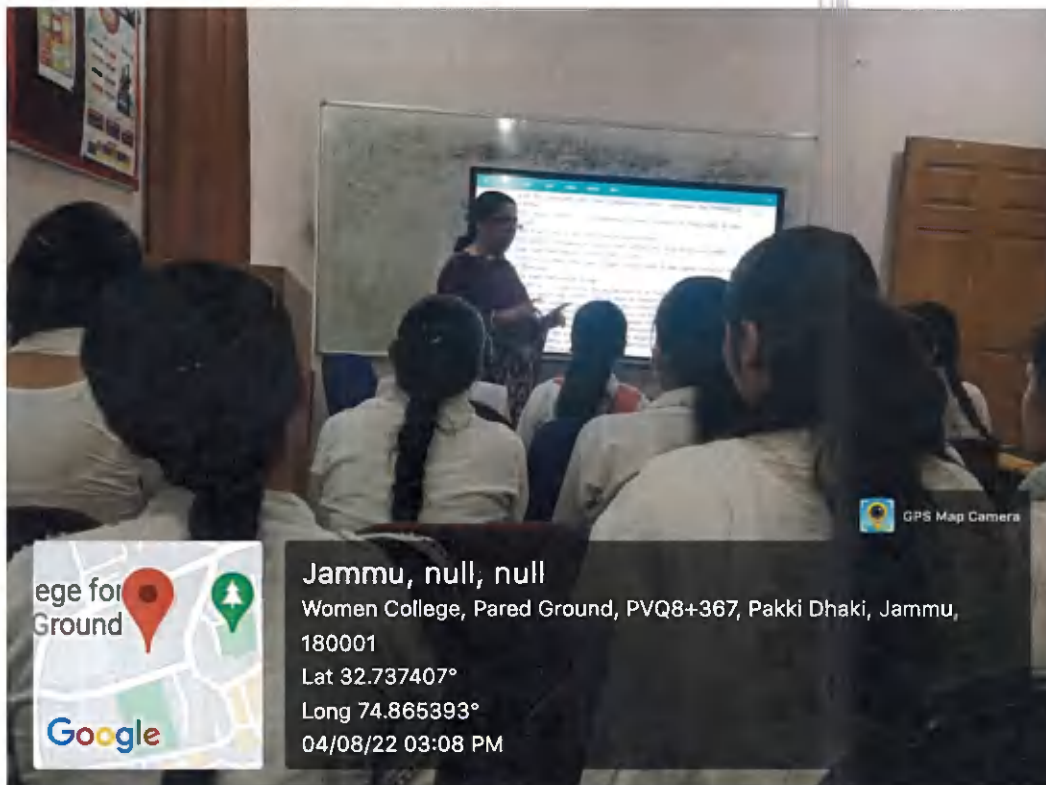
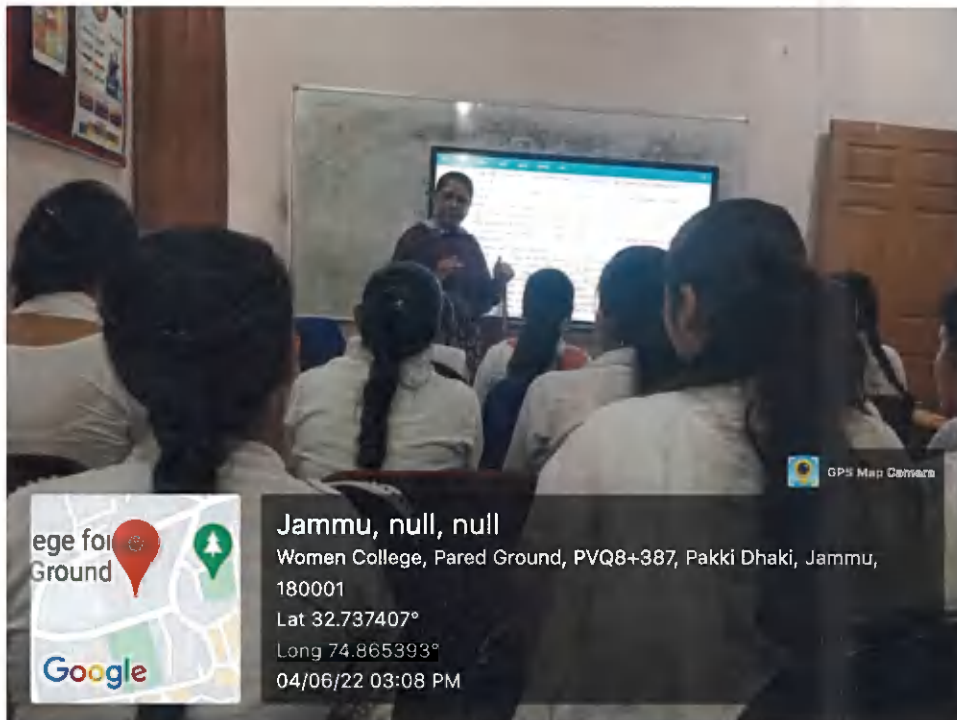
MCA (P.G) CLASSROOM -1



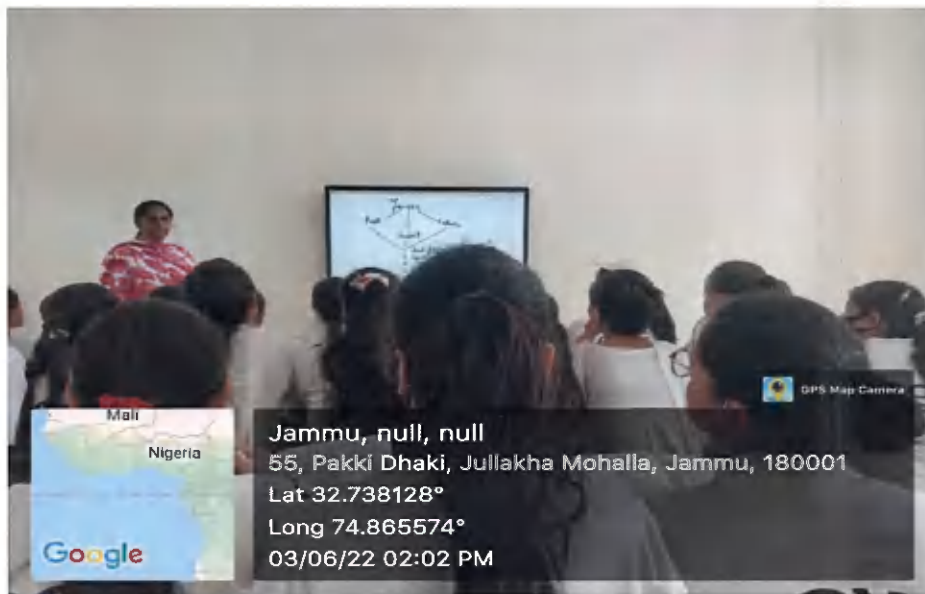
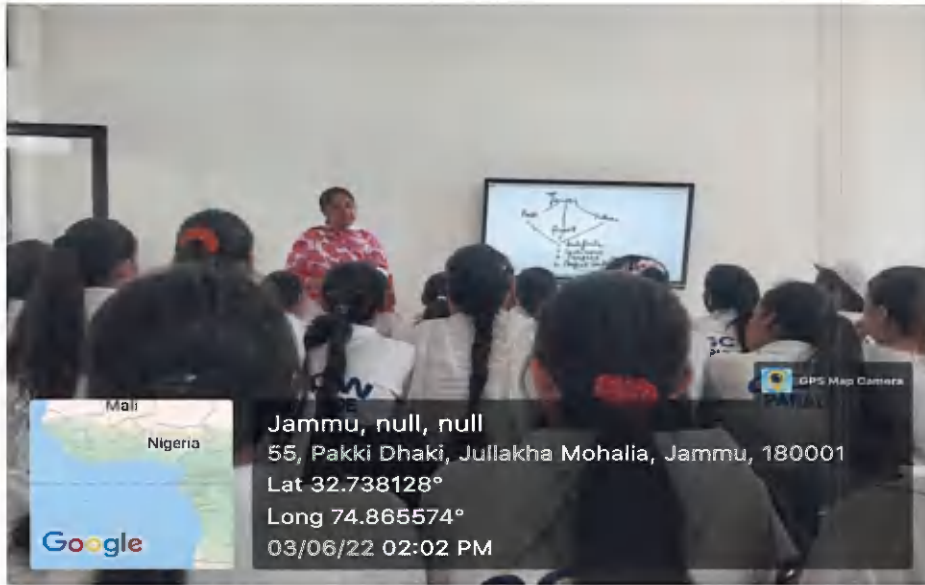
MCA (P.G) CLASSROOM -2



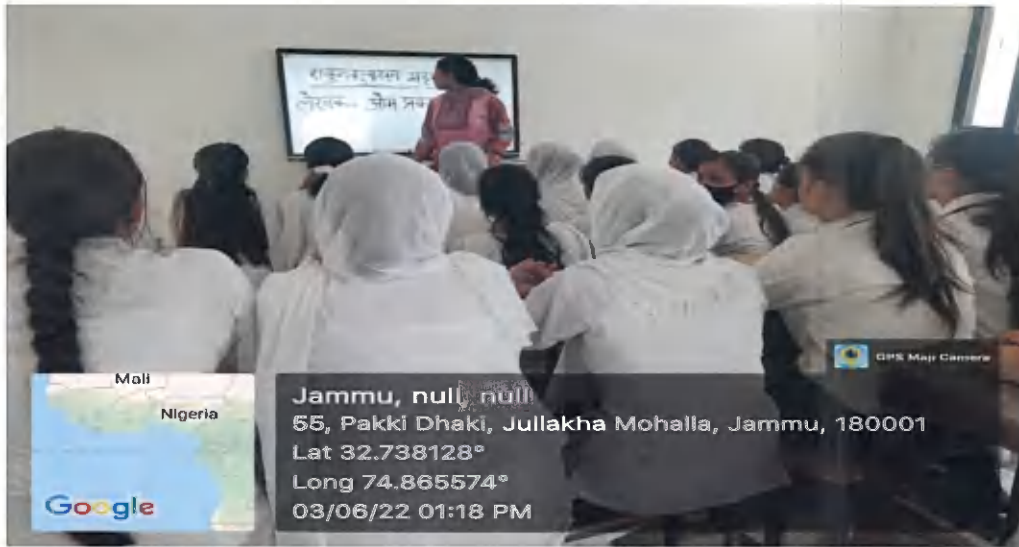
A.B.P.G ENGLISH CLASSROOM-1 (SMART CLASSROOM)



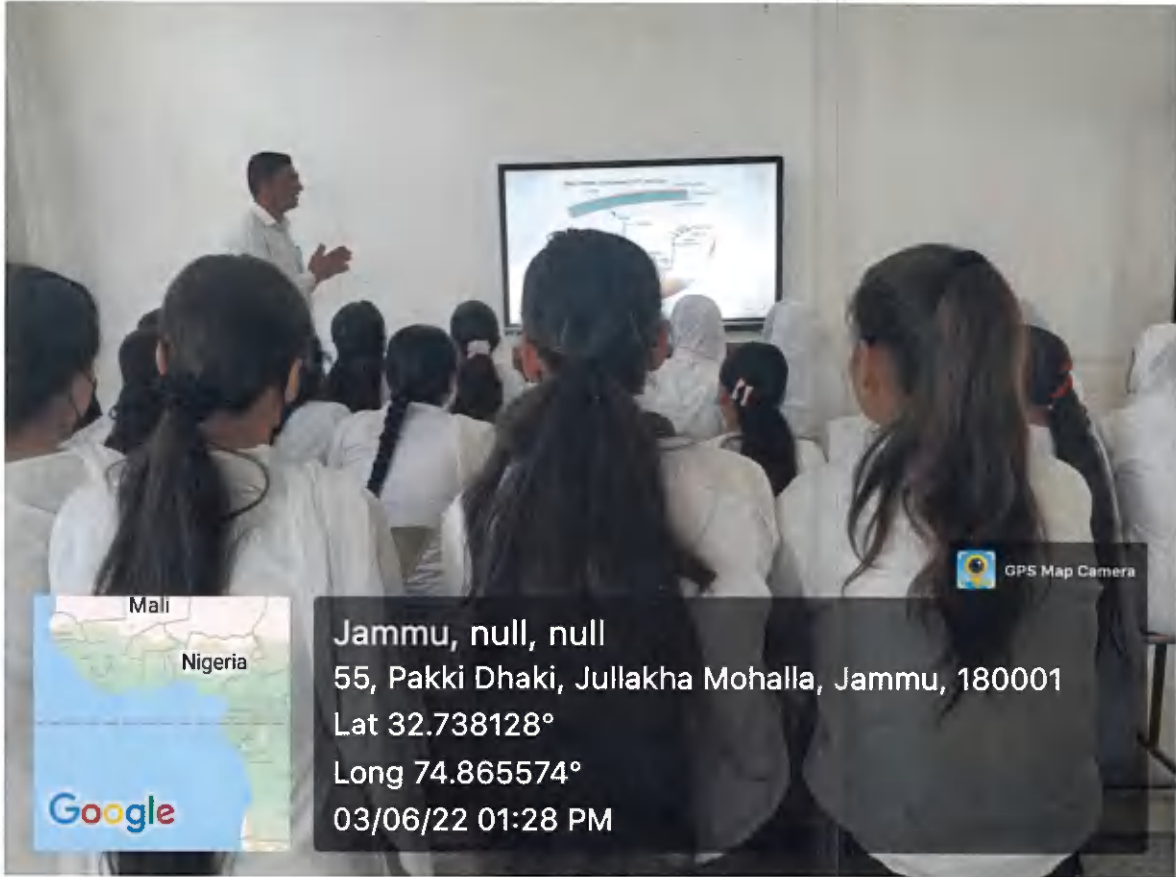
A.B P.G ENGLISH CLASSROOM-1 (SMART CLASSROOM)



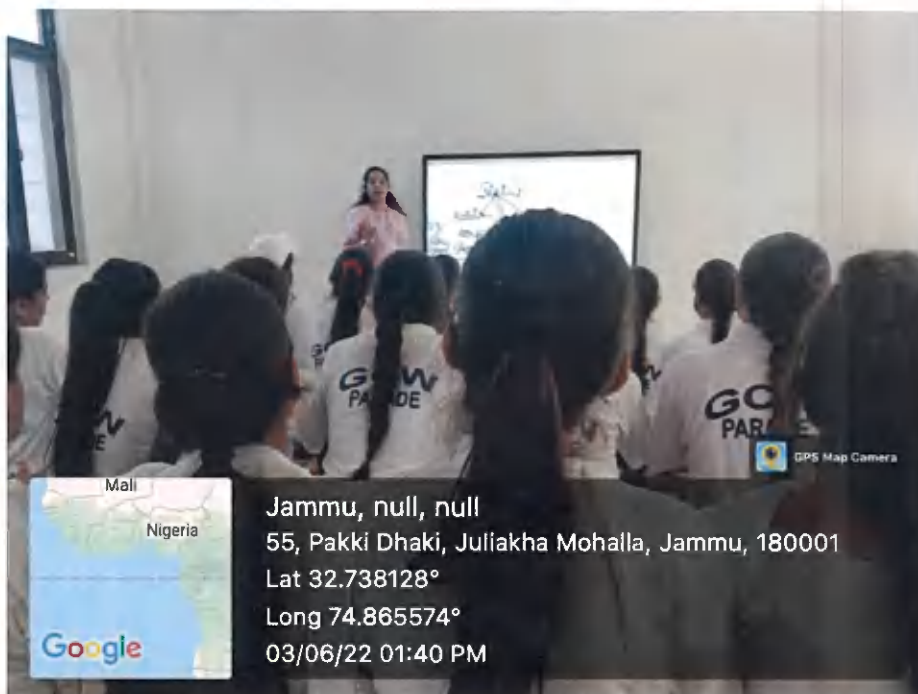
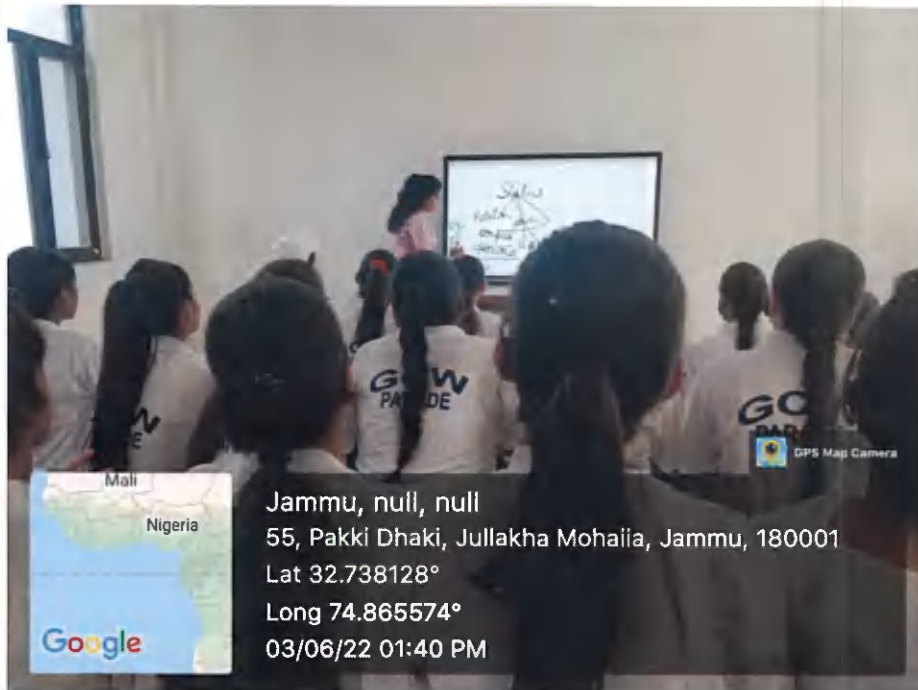
M.B CLASSROOM 1 (SMART CLASSROOM)



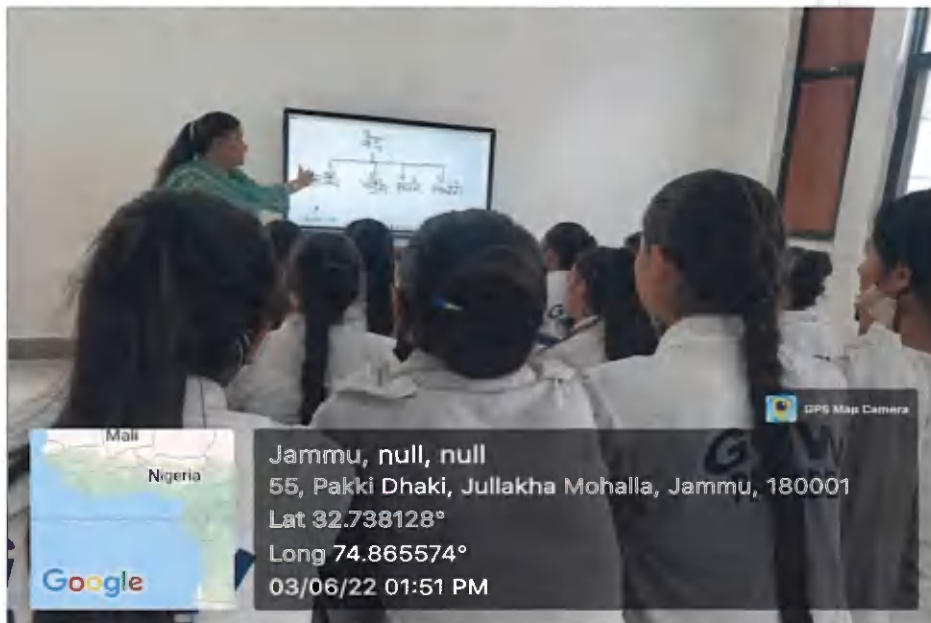
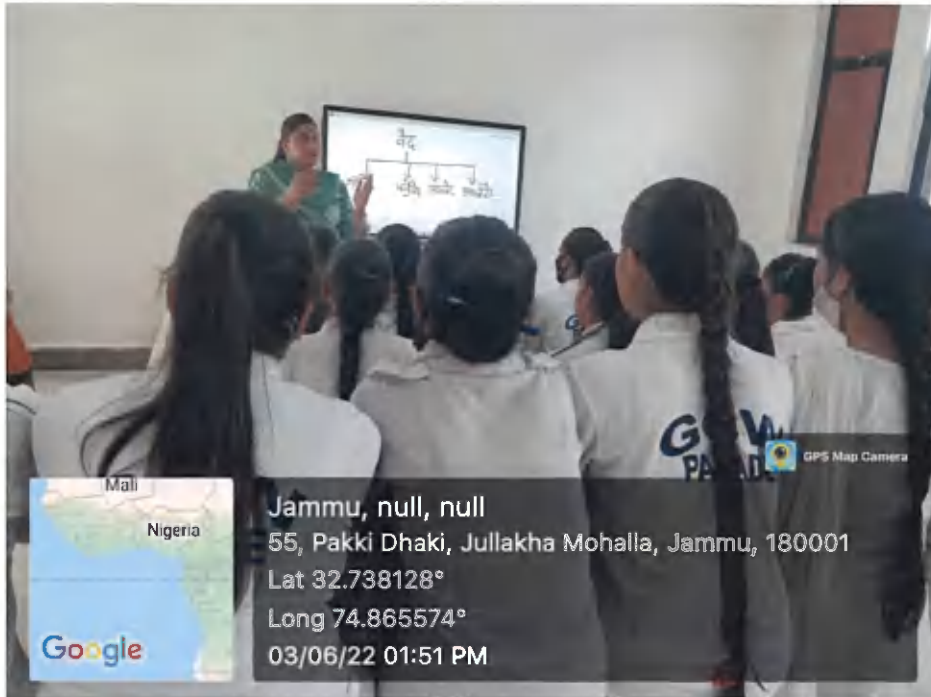
M.B CLASSROOM 2 (SMART CLASSROOM)



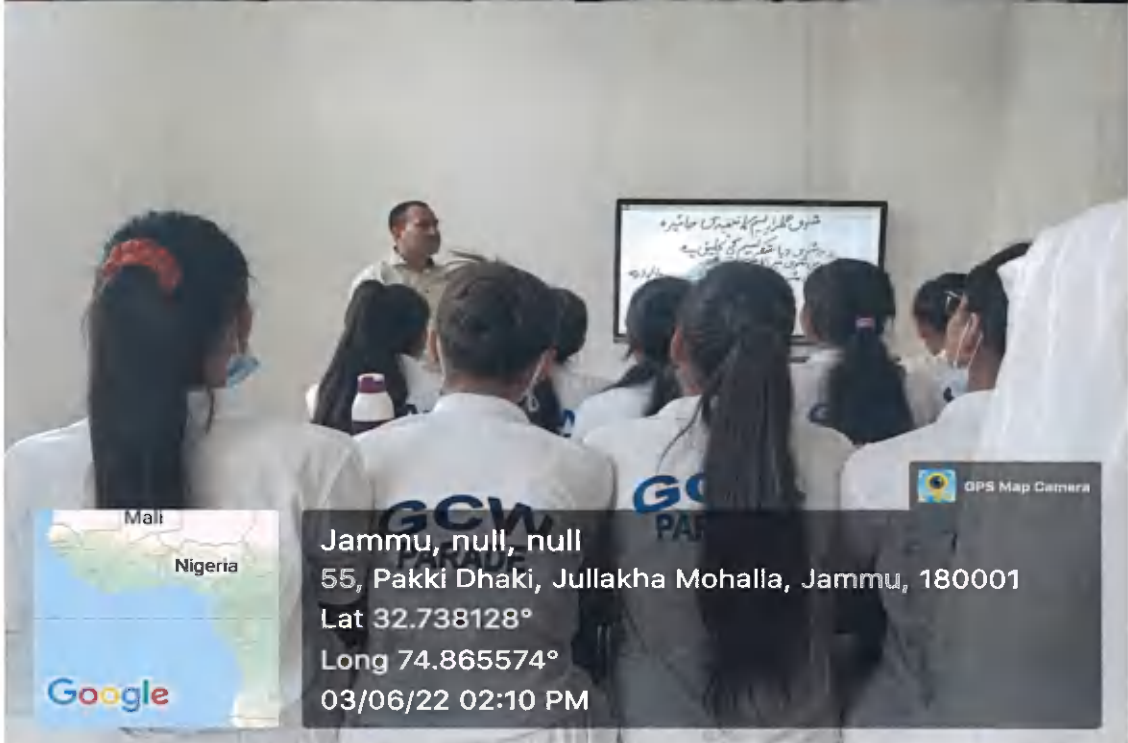
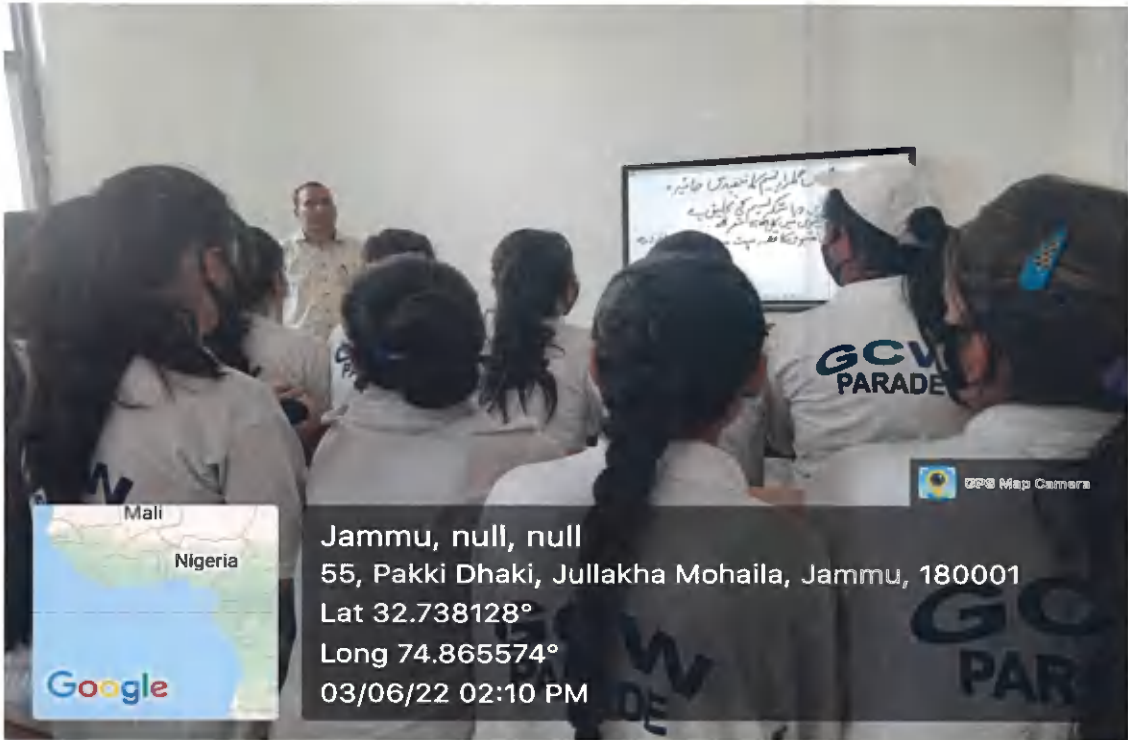
M.B CLASSROOM 3 (SMART CLASSROOM)



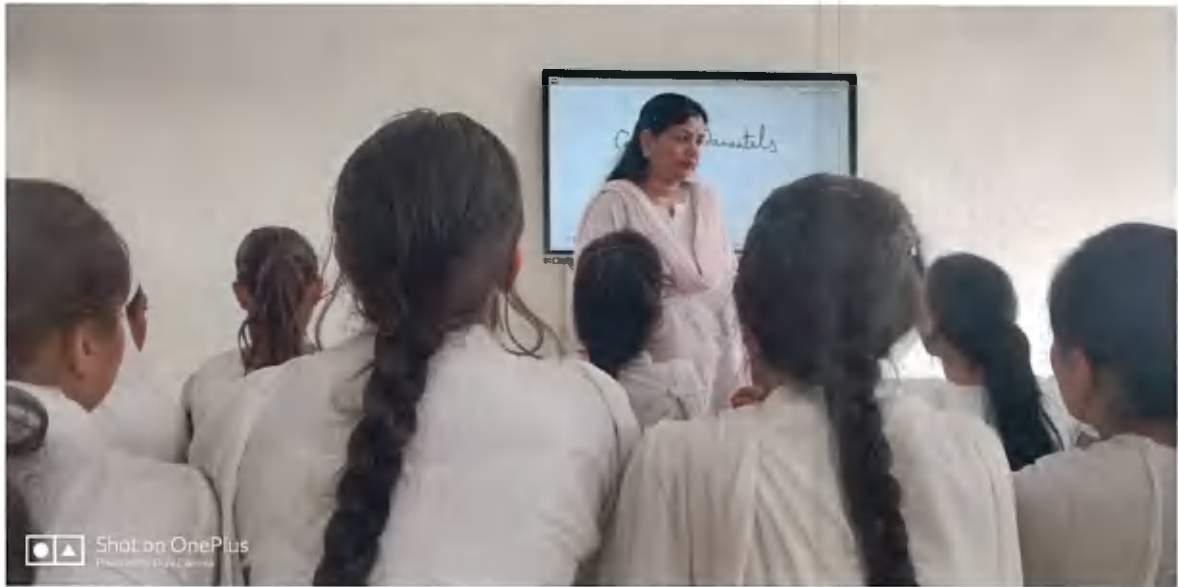
M.B CLASSROOM 4 (SMART CLASSROOM)



M.B CLASSROOM S (SMART CLASSROOM)



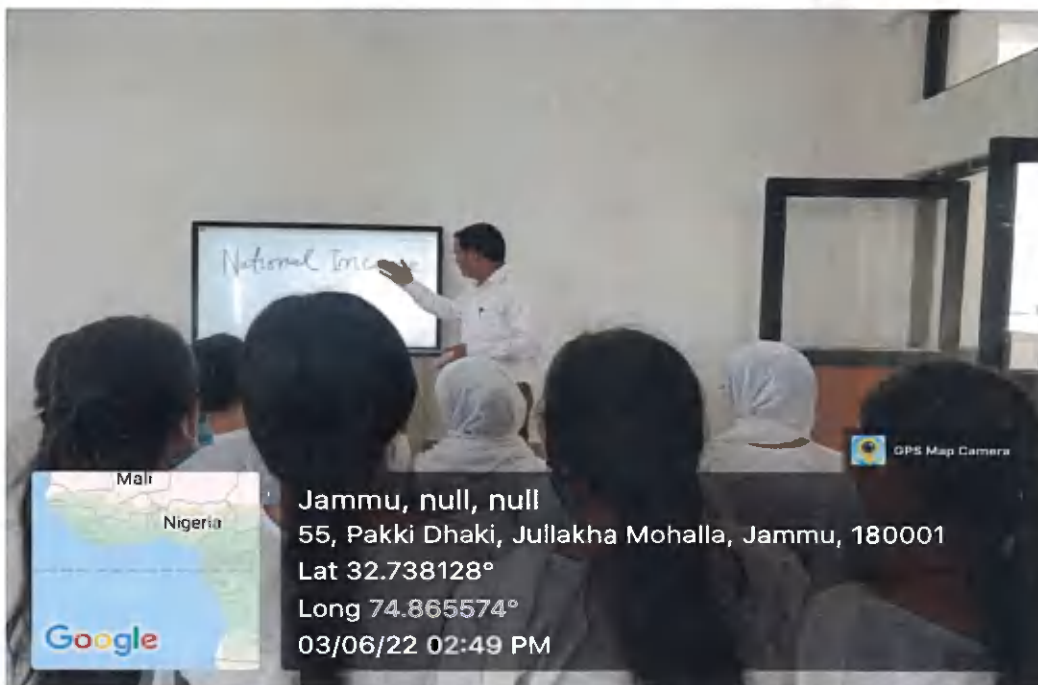
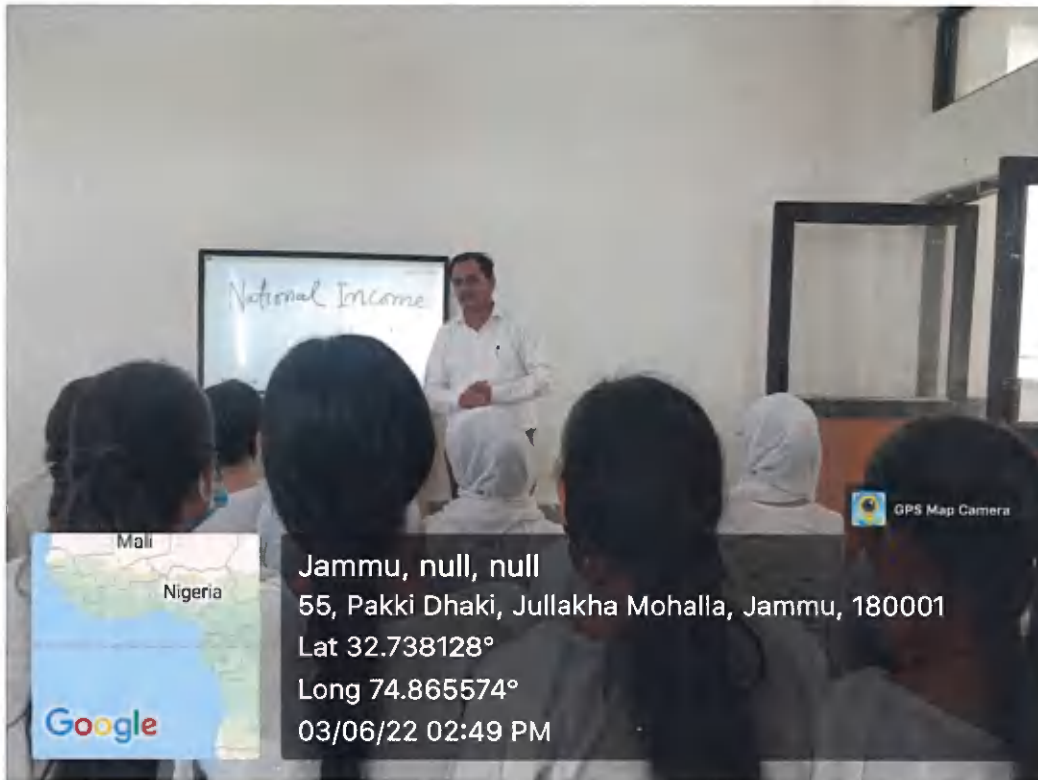
M.B CLASSROOM 6 (SMART CLASSROOM)



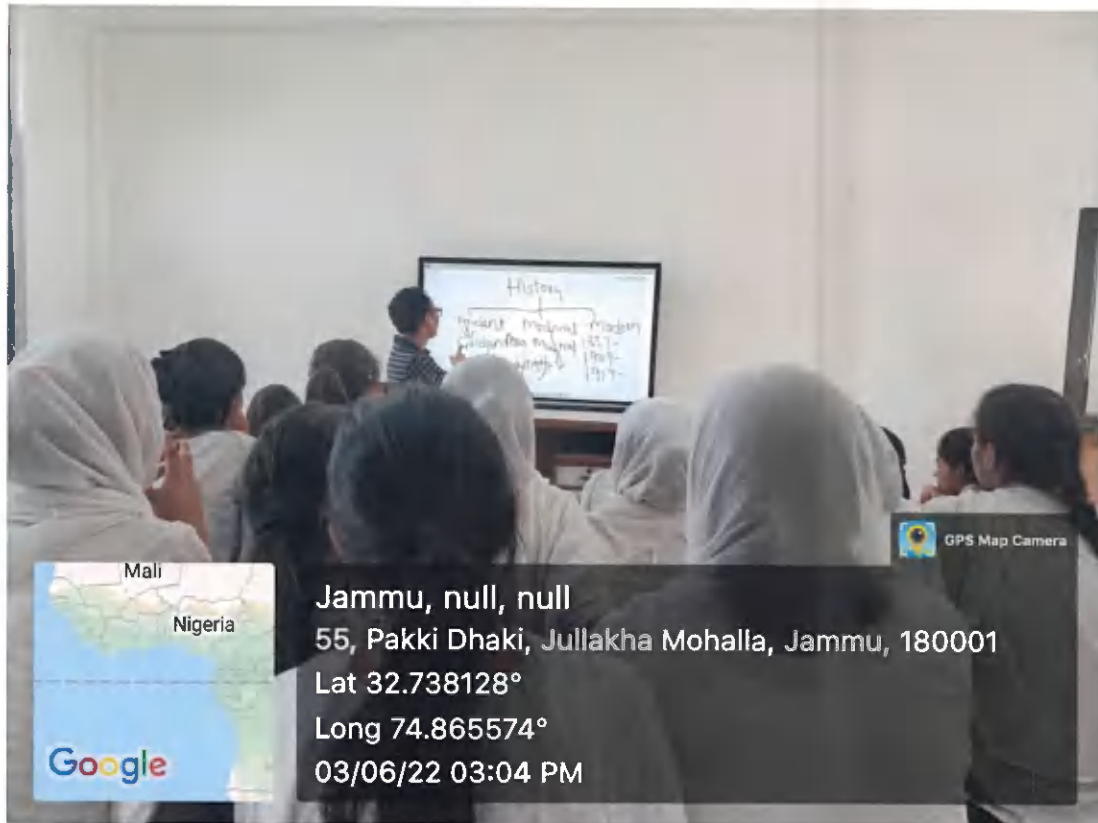
M.B CLASSROOM 7 (SMART CLASSROOM)



M.B CLASSROOM 8 (SMART CLASSROOM)



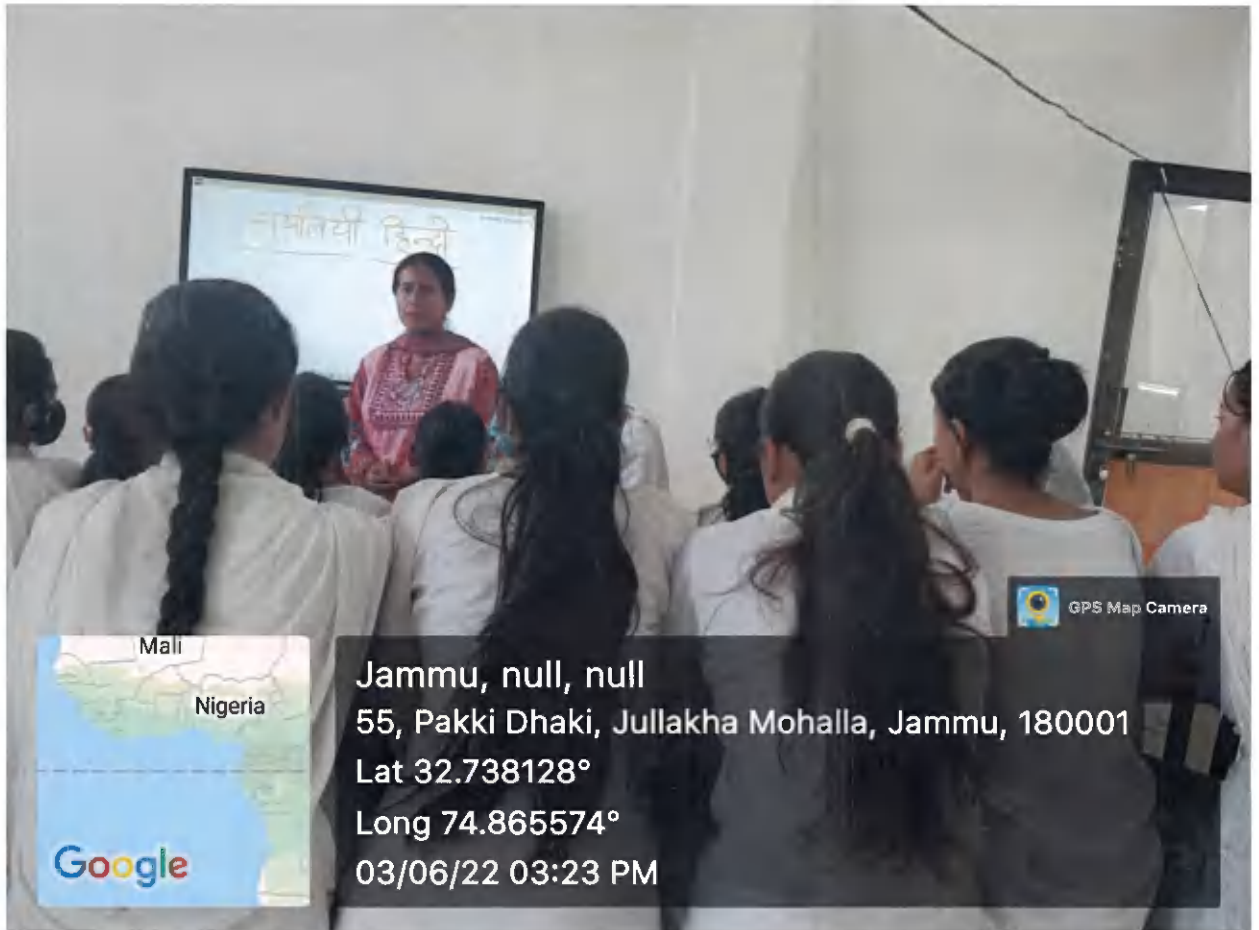
M.B CLASSROOM 9 (SMART CLASSROOM)



M.B CLASSROOM 10 (SMART CLASSROOM)



M.B CLASSROOM 11 (SMART CLASSROOM)



M.B CLASSROOM 12 (SMART CLASSROOM)



**GOVT. COLLEGE FOR WOMEN, PARADE GROUND,
JAMMU-180001, J&K.**

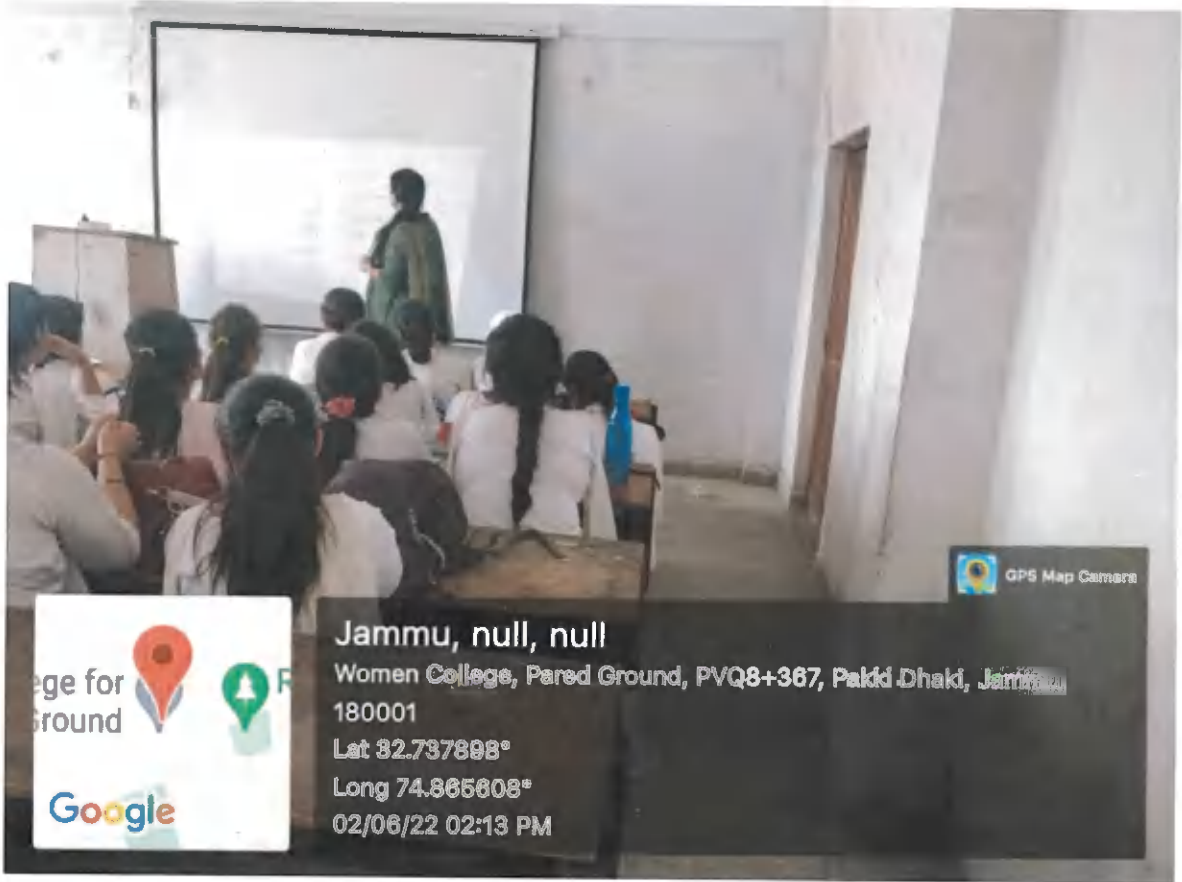
Criterion IV

ICT Based Classrooms

Supporting documents



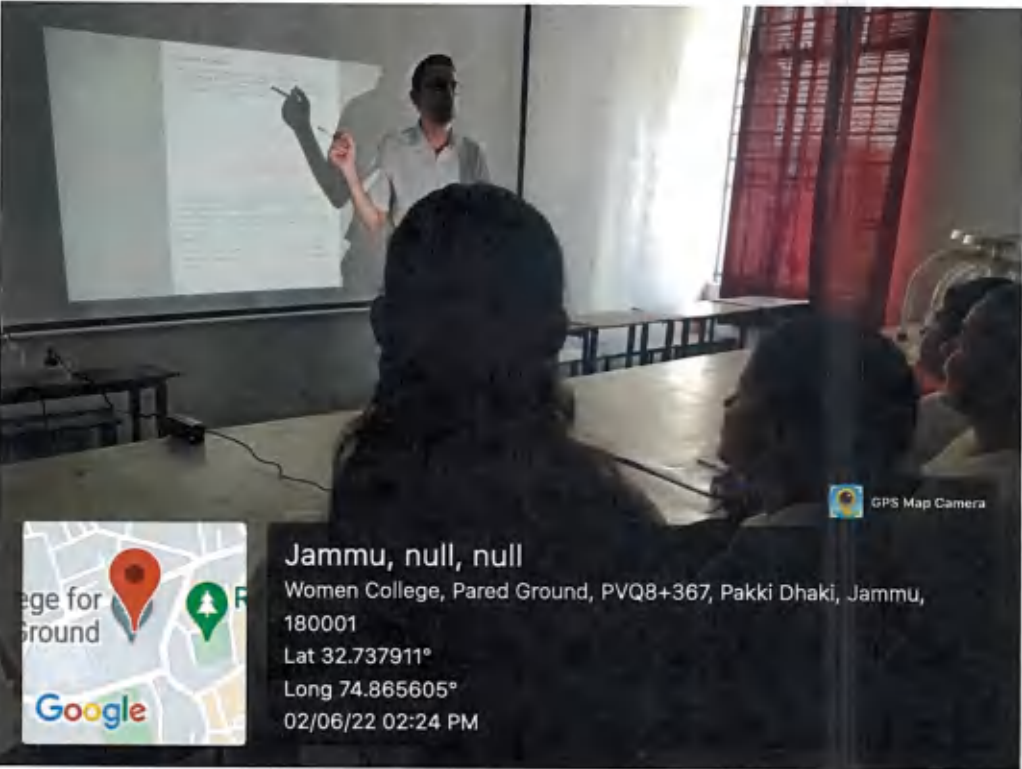
SAROJINI NAIDU CLASSROOM-I0 (ICT)



SAROJINI NAIDU CLASSROOM-11 (ICT)

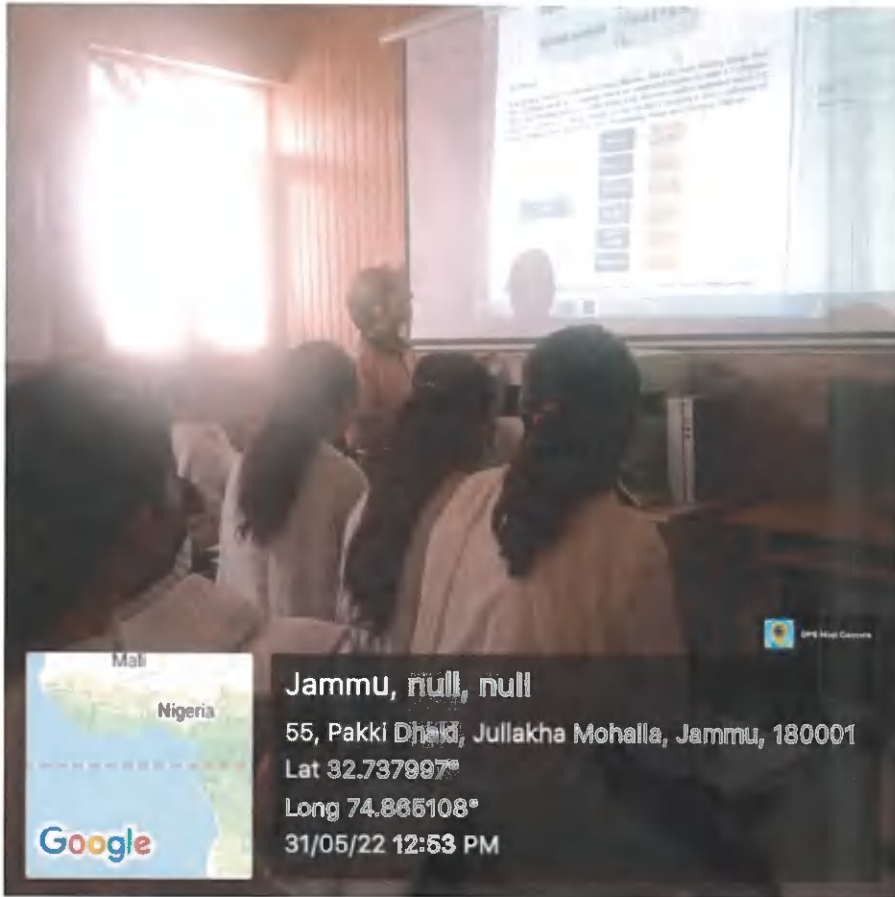


SAROJINI NAIDU CLASSROOM-26





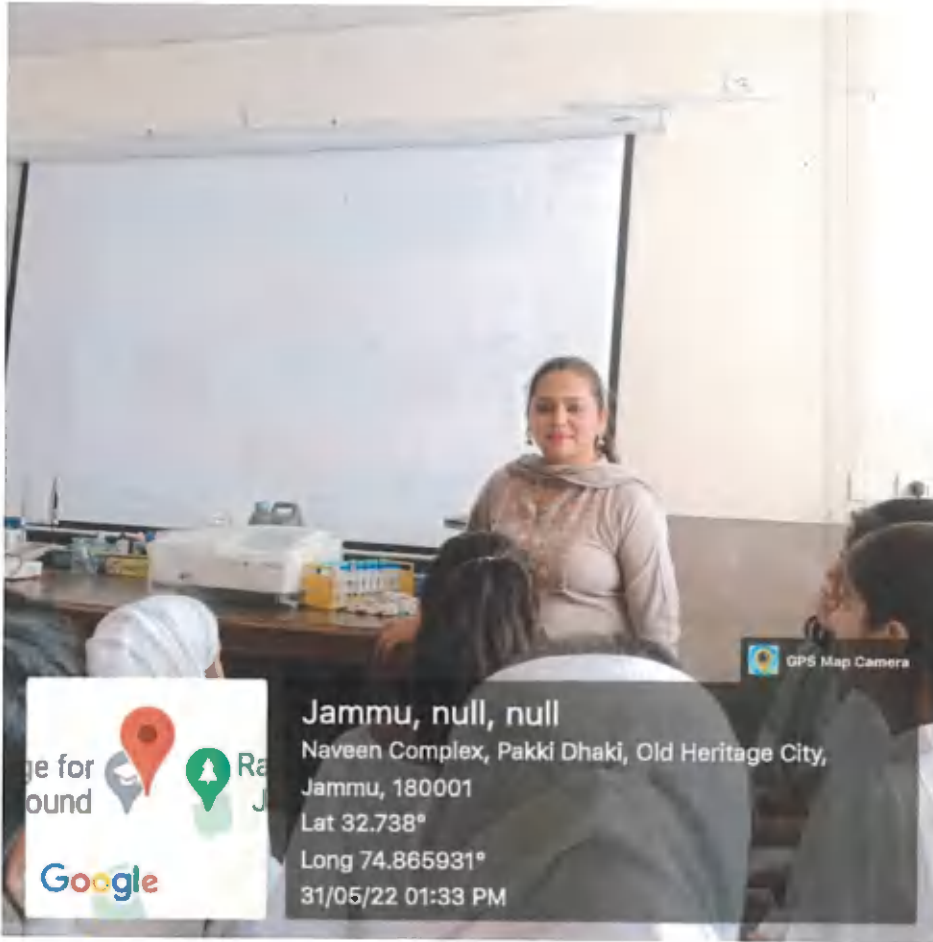
S.B.P CLASSROOM-4 (ICT)



K.S ELECTRONICS CLASSROOM/LAB-2 (ICT)



K.S U.G ZOOLOGY CLASSROOM-3 (ICT)



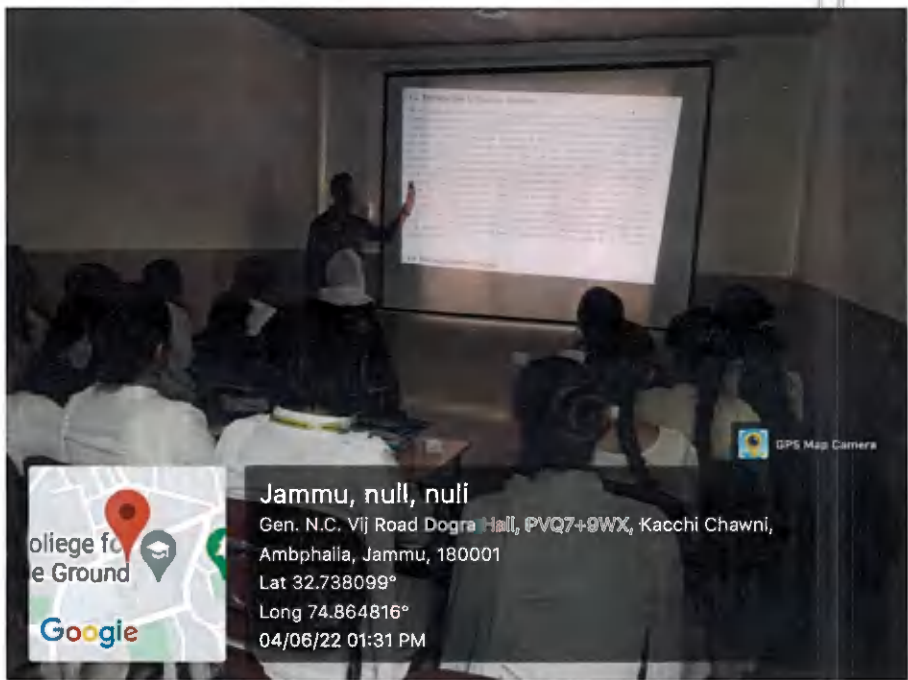
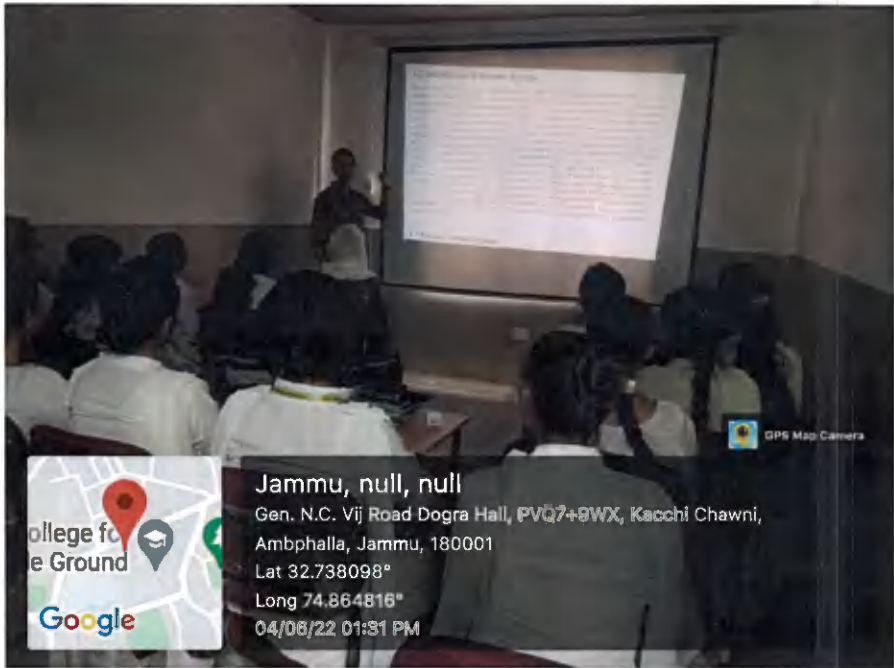
K.S BIO-TECHNOLOGY CLASSROOM/LAB-1 (ICT)



D.A P.G CLASSROOM-1



S.B U.G. CLASSROOM/LAB-1 (ICT)



S.B U.G. CLASSROOM/LAB-2 (ICT)